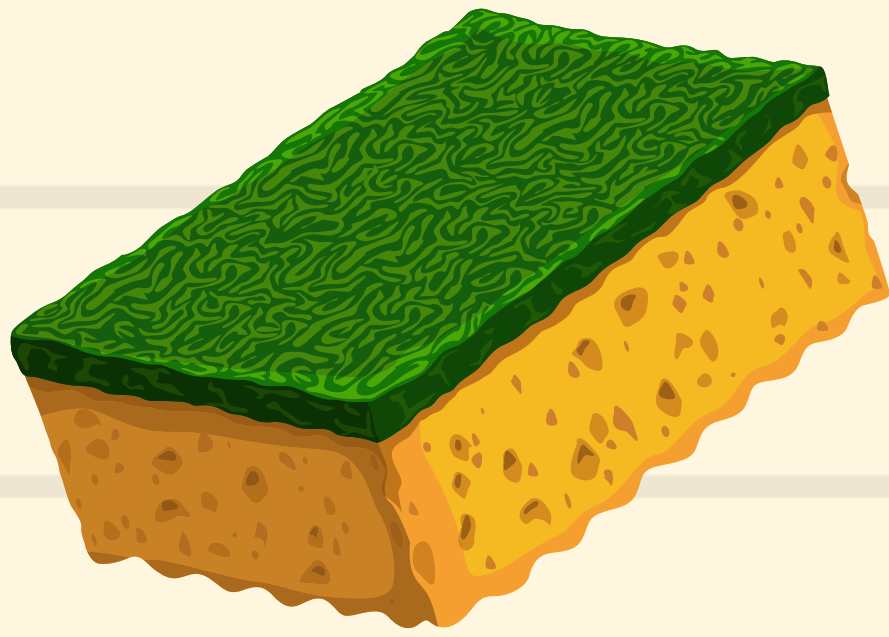


# SERC MARSH METAPHORE

## SCAVENGER HUNT



**ACTS LIKE A  
SPONGE**



**FOOD  
SOURCE**



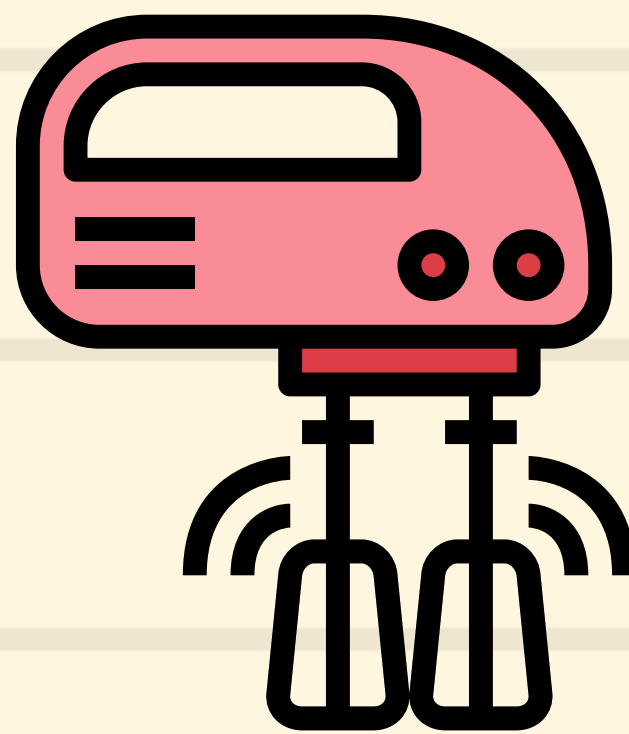
**SIEVE (FILTERS)**



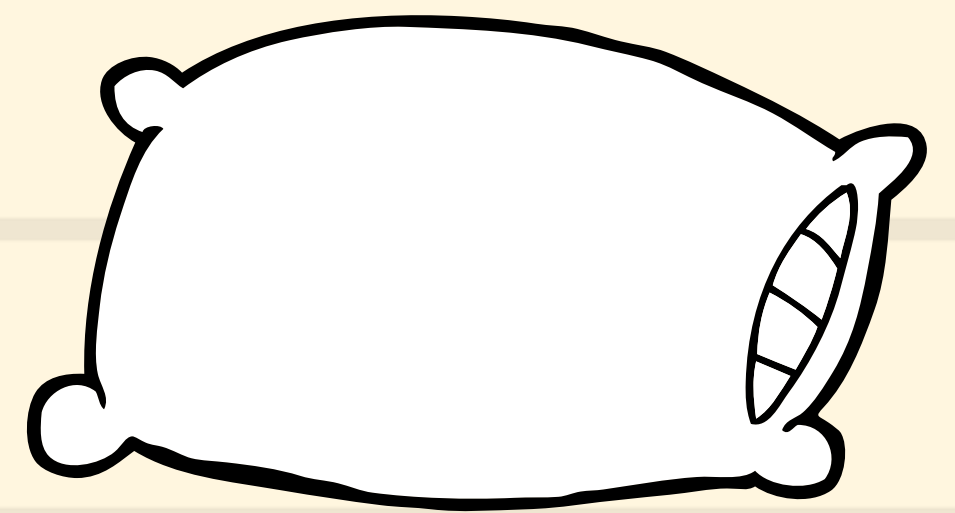
**HOMES**



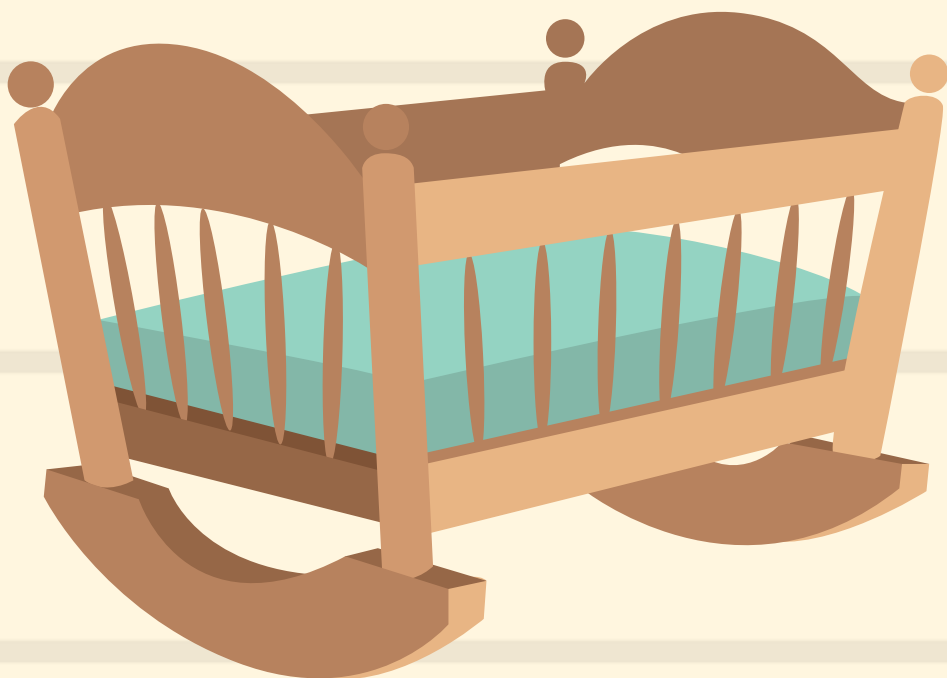
**MONEY  
(SOURCE OF INCOME)**



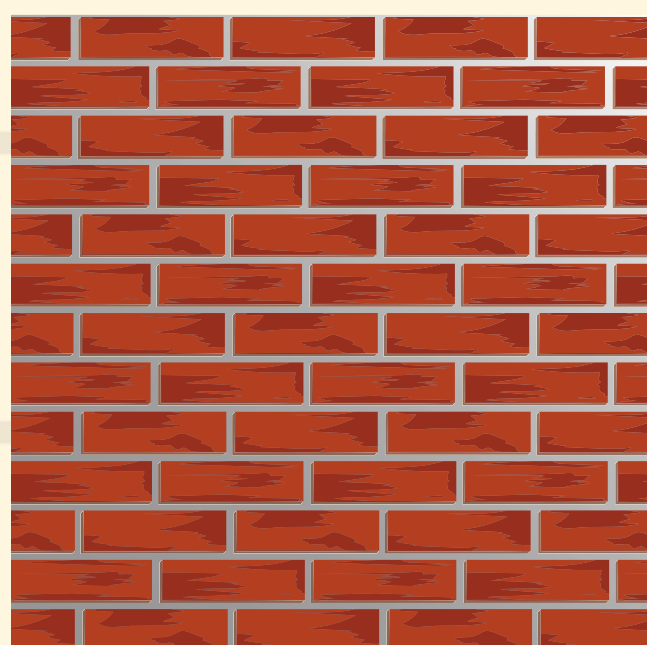
**MIXES, ADDS  
OXYGEN AND  
NUTRIENTS**



**PILLOW  
(PLACES TO REST)**



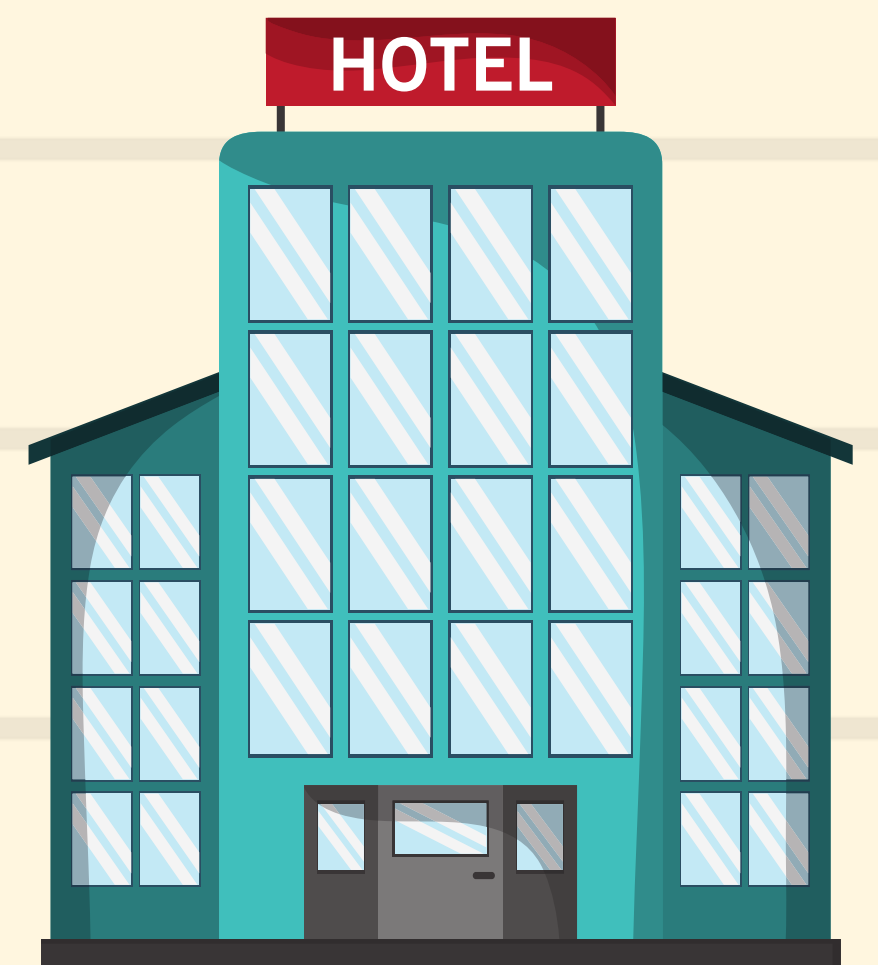
**NURSERY**



**PROTECTIVE WALL**



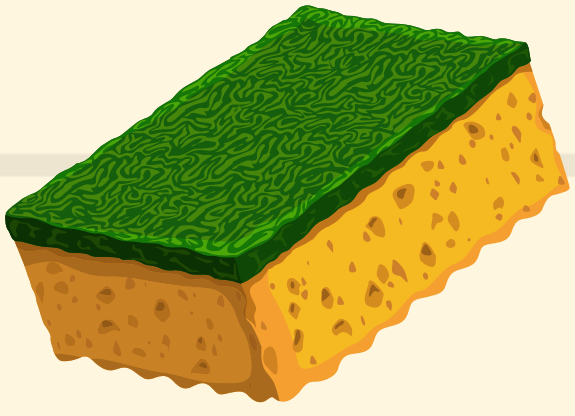
**HOLDS LIKE FINGERS**



**HOTEL (PLACE TO  
STAY)**

# SERC MARSH METAPHORE

## SCAVENGER HUNT



### Sponges: Look for-

- **Marsh tree/plant roots** that might soak up water
- **Marsh soil that is wet** and holding water
- **Dead leaves that are wet**



### Food Source: Look for-

- **Marsh trees/plants** that might be food
- **Marsh mud** where stuff is decomposing
- **Food in the water** or plankton
- **Leaves being eaten** by insects
- **Signs of animals** eating



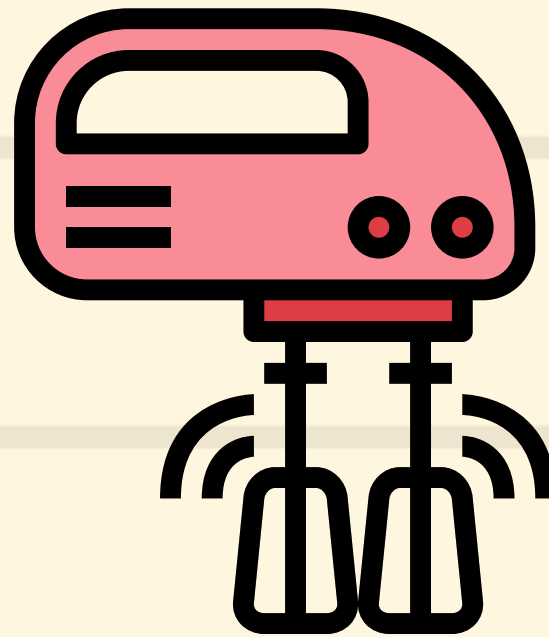
### Sieve (filter): Look for-

- **Plant and tree roots**
- **Marsh mud.**



### Homes: Look for-

- **Grasses** where insects and animals live
- **Mud** where clams, crayfish and other invertebrates live
- **Trees** and holes where animals live
- **Leaves** with insects



### Mixes and adds oxygen and nutrients: Look for-

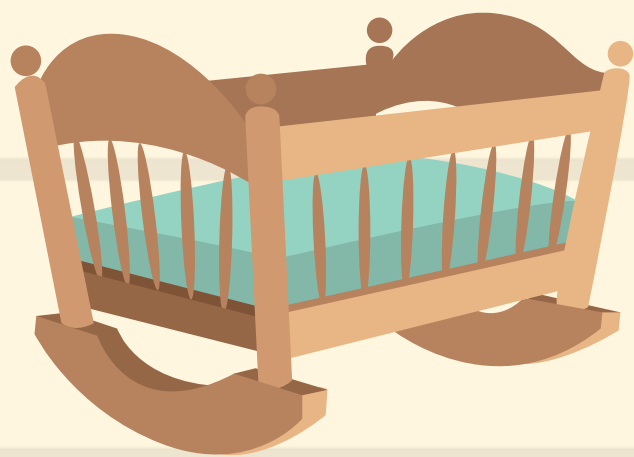
- The **waves and water** coming into the marsh bring in water that mixes with mud, soil, and nutrients.
- The **stream flowing into the marsh**, and plants that water flows around, increasing oxygen.



### Money (source of income):

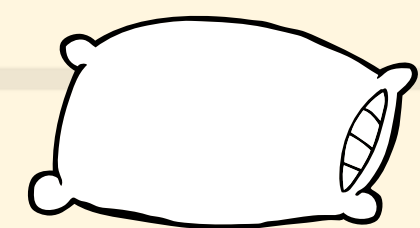
#### Look for-

- **Fish and animals** that live in the grasses
- **Trees** that live around the marsh
- **People that use the trail** and overlook for recreation.



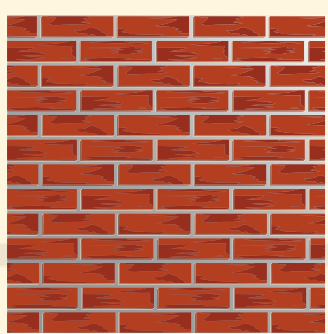
### Nursery: Look for-

- **Grasses** where insects, fish, crabs other young animals hide.
- **Muddy places** where clams, crayfish and other baby invertebrates live
- **Trees** for animal babies (nests)
- **Leaves** where insects larvae live



### Pillow (places to rest): Look for-

- **Grasses** where birds sleep for the night, animals and insects too
- **Muddy places** where clams, crayfish and other invertebrates live (crayfish towers)
- **Trees** for animals (squirrel nests)
- **Leaves** with insects

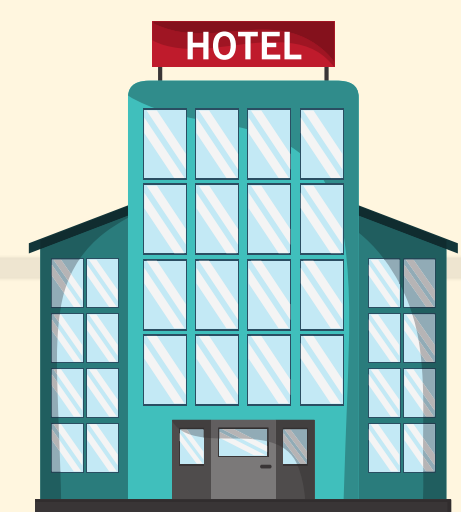


### Protective Wall: Look for-

- **Grasses** holding soil in place and protecting the land from a wall of water in bad weather.
- **Mud** where crayfish and other animals make walls for their burrows.
- **Trees** holding soil in place with their roots, and their leaves make a protective wall from wind.



- **Holds like Fingers:** Look for-
- **Grasses roots** that hold soil in place
- **Tree roots** that hold soil in place
- **Hairs of vines** that hold vines on trees



### Hotel (places to stay): Look for-

- **Grasses** where birds migrate and feed as well as rest.
- **Nests** that baby animals live in
- **Holes** where animals hide, and come out to eat when it's safe