

Tips and resources
for algae identification
in the field!

SERC SEAWEED ID



***Fucus distichus*, Rockweed**

Brown family. Fronds can get 4 mm wide, 30 cm long. Disc-like holdfast. Dichotomous branching. Ends of the frond are rounded and may be swollen. Midrib usually present.



***Mazaella splendens*, Irridescent Weed**

Red family. Thallus thin and rubbery, may be up to 24 cm wide, 40 cm long. May range from dark green, to violet, to deep crimson in color. Irridescent when wet.

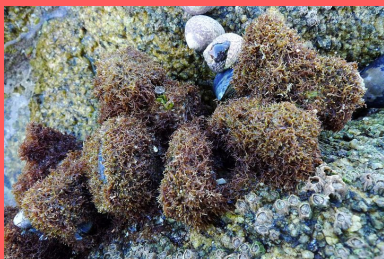
***Mastocarpus papillatus*, Turkish Washcloth**

Red family. May come in a variety of forms. Flat, thin, and rubbery thallus up to 18 cm long. May be covered in bumps along thallus. Tips may dichotomously branch.



***Ulva* spp., Sea Lettuce**

Green family. Multiple species in area require genetic testing to identify. Thin, cellophane like thallus. May grow to cover entire rocks or beds. Very common.



***Caulacanthus ustulatus*, Sea Moss**

Red family. Appears as a small, densely packed red bush or carpet. Usually 4-8 cm thick. Common as an undercanopy species on top of rocks. Invasive.



***Pyropia perforata*, Nori**

Red family. Dark purple to brown in color. Thin, cellophane like thallus. Clings tightly to rocks during low tide, may be iridescent during high tide. Edible, give it a try.

Keywords

- Thallus - a plantlike vegetative body
- Holdfast - a root-like structure, varies from alga to alga