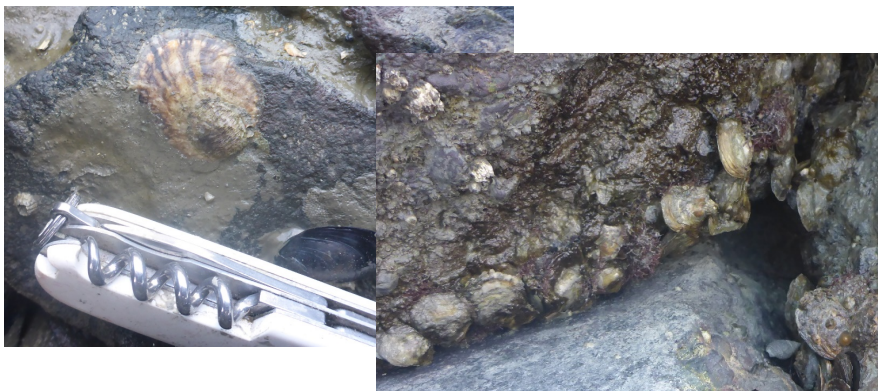


SERC invertebrate guide for field surveys

These are the critters we are counting and measuring:

Olympia oyster. Vary in color, reddish or yellowish brown, with or without dark lateral or longitudinal striping. Occur individually and in clusters. Often with a jagged, irregular edge.



Atlantic oyster drill: Reddish brown shell and operculum. Approximately 3-6 spiraling whorls with layered ridges. Up to approximately 30 mm long. Egg cases are yellow and translucent and elliptical with a suction cup-shaped tip.



Other organisms we are counting that you might find under Fucus:



Eastern mud snail



Common periwinkle



Black turban snail



Slipper limpet
(note the smooth, even edge)



Shield limpet



Chiton



Bay mussel



Tube worm and barnacles